

# The Nigel Revell Trophy Scramble

## Directions & Final Instructions

7<sup>th</sup> June 2026

Tincleton

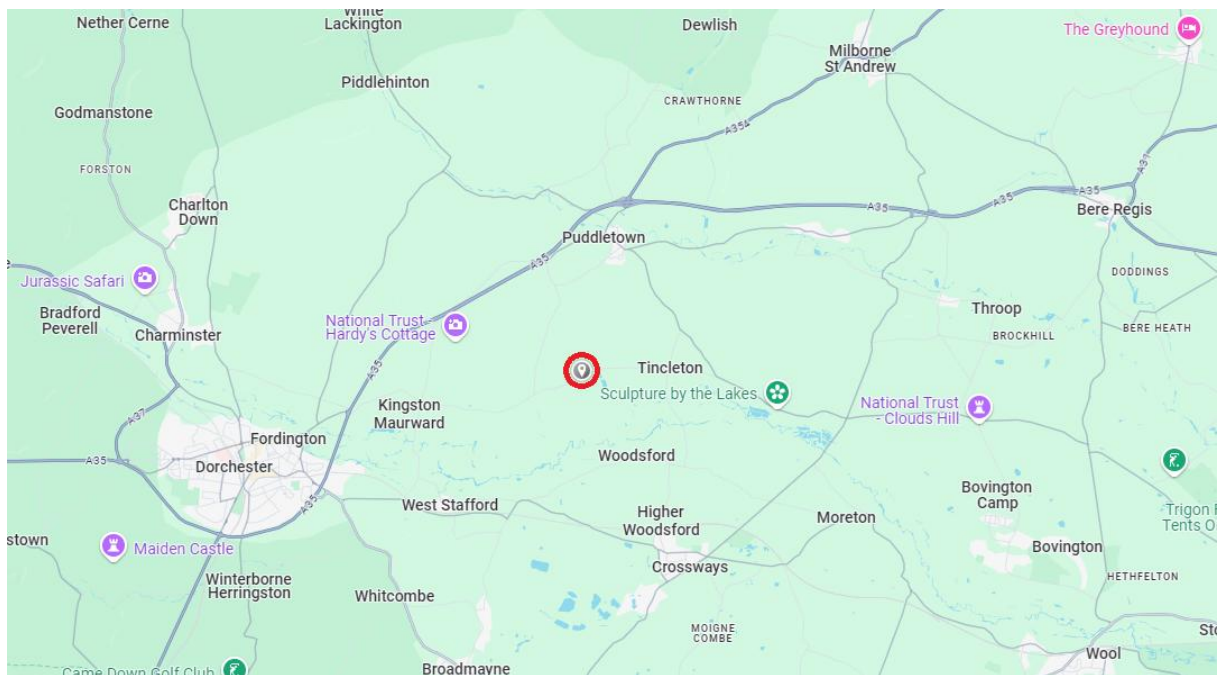
Nearest Post Code: **DT2 8QW**

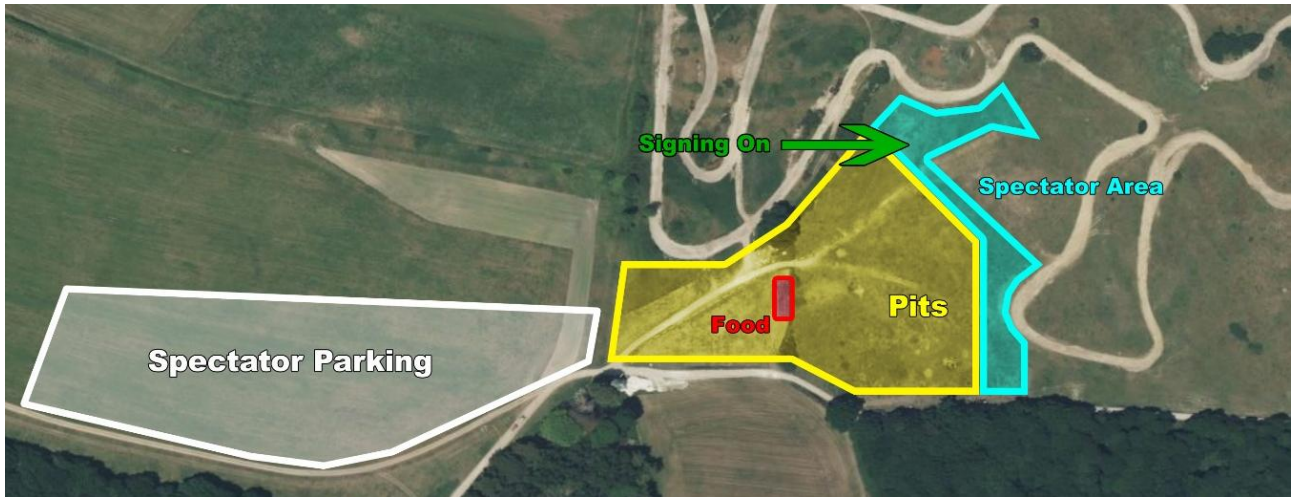
Coordinates: 50.725477 , -2.3548152

Map Reference: SY 75052 91822

W3W: [///practical.splice.liver](http://practical.splice.liver)

[Google Maps Direct Directions Link](#)





Spectators, over the age of 16 years £5 in cash - kids go free

**Working party Saturday 6<sup>th</sup> from 9am**

Camping allowed – please don't arrive before 12 midday on Saturday 6<sup>th</sup> and observe parking directions

### **Important Notice - PA system use prohibited**

Unfortunately, due to local sensitivities we have only just been told that we are prohibited from using our PA system at this track, so there will be no loudspeaker announcements or commentary possible.

Therefore, a bell will be rung approx. 10 minutes before the start of practise, throughout the pits to make riders aware of the start of proceedings of the day.

Racing will proceed promptly after the Workers Race and will run until 12.30, after which no further races will start, for the lunch break.

Near the end of the lunch break, the bell will be rung again to signal 10 minutes warning until the resumption of the afternoons racing, with the Feature Race first, and regular racing resuming after the trophy presentation at the end of the feature race.

A board will be placed near the pit entry with any updates through the day. Our apologies for any inconvenience caused, but we have only been made aware of this restriction in the last couple of days.

### **Timings for the day (approximate)**

08:00-09:00 Signing On & PRI

09:00-10:00 Practice in Groups - as per race order - see programme

10:15 Workers Race

10:30-12:30 First Races

**Note – should the time allow, racing will continue with race 7 (the second Twinshock E race) directly after race 6, with racing continuing in this order through the second block until the lunch break at 12.30, after which no further races will start**

12:30-13:15 Lunch Break

13:15 Feature Race - The Nigel Revell Trophy Race - see programme for line up - additional riders to be posted on the board at lunchtime

Trophy Award straight after the feature race then resumption of racing

**Order of races/practise:**

Twinshock E

Pre-68

Twinshock D

Twinshock C

Pre-74

Twinshock A & B (shared race/practise)

The programme available to download here: [https://dorsetclassic.com/program/2026/2026\\_NRT\\_Prog.pdf](https://dorsetclassic.com/program/2026/2026_NRT_Prog.pdf)

**FINAL INSTRUCTIONS**

Due to the layout of this track, we would like to remind riders of a few rules. Any riders not following the correct AMCA rules will be asked to go home.

Please be respectful to all marshals, helpers, other riders and spectators.

We greatly appreciate anyone who can help pack up at the end of the day. Thank you

**FLAGS**

**YELLOW FLAG - Slow down. Proceed with caution. Do not overtake. Take extreme care, there may be someone injured on the circuit.**

**RED FLAG - used only for stopping races. All riders should then stop at the first red flag, if it is safe to do so.**

**PRACTICE**

We will be the coloured operating peg system for practice; these will be issued at signing on and given back at the practice pit box. No peg no practice – check programme for the order!

You must attend your practice session in the correct group (same order as first block of races) failure to do so may result in not being able to race.

If you can't make your practice session for reasons such as mechanical issues, then you are allowed to go out in a higher grader grouped practice session, for example D groups rider can ride in B groups practice but a B groups rider cannot practice in the D groups session.

**PITS**

No pit bikes. No riding in the paddock. Dogs to be kept on a leash please at all times.

STRICTLY walking pace only, NO racing up and down to adjust your bikes etc

Please take all rubbish home

**SIGNING ON AND PRE-RACE INSPECTION**

Please sign on early as possible to make it easier for our team.

A valid form of photo identification must be shown on the day of the event as proof of identity and left as deposit for your transponder - 2026 AMCA Licence or driving licence for day licence entrants.

Make sure your bike, helmet and protective gear are all correct and suitable as per the AMCA Rule Book instructions.

Link to the official AMCA rule book:

[https://www.amca.uk.com/images/downloads-general/Classic\\_Rule\\_Book\\_2026.pdf](https://www.amca.uk.com/images/downloads-general/Classic_Rule_Book_2026.pdf)

THE NIGEL REVELL TROPHY invitation race will be the first race after the interval and the Trophy will be presented at the conclusion of that race – any additions to the line up in the programme will be posted on the noticeboard at lunchtime.

<https://www.facebook.com/groups/226523408909/>  
[www.dorsetclassic.com](http://www.dorsetclassic.com)